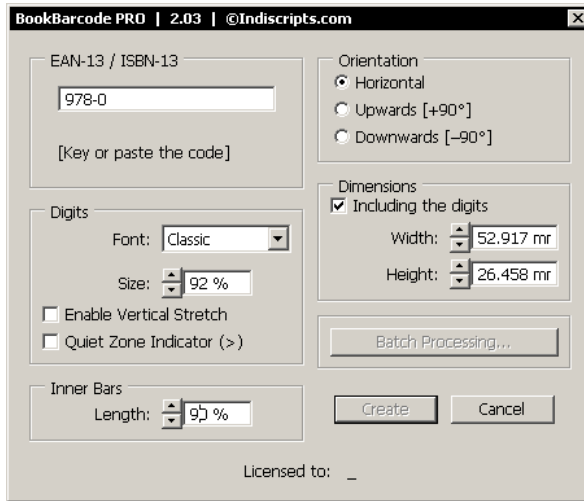


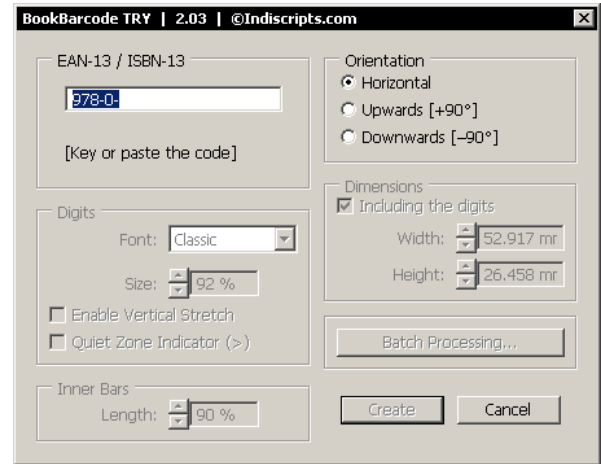
BookBarcode howtos

© Indiscripts.com | Sept. 2010

Sandbox



PRO Version



TRY Version

1 GETTING STARTED

1. Download BookBarcode from <indiscripts.com>.
[PRO Version] Retrieve the package from your private link and save it on your hard disk.
[TRY Version] Right-click **BookBarcodeTry.zip** and choose Save Target / Link As.
2. Extract **BookBarcodePro.jsx** (or **...Try.jsx**) from the zip file, then place the file into your InDesign scripts folder (usually: **Scripts Panel**).
3. Start InDesign, open the Scripts panel: **Window > Utilities > Scripts** (CS5), or **Window > Automation > Scripts** (CS3, CS4). Then double-click on **BookBarcode...jsx**.

- BookBarcode supports **InDesign CS3, CS4 or CS5** (recommended) and works on both **Mac and Win** platforms.
- The **TRY version** has some limitations: You cannot change the style of the barcode (Digits, Inner Bars) and the Dimensions panel is disabled. Batch Processing is limited to 5 barcodes. The Script execution is delayed for 20 seconds.

BookBarcode howtos

© Indiscripts.com | Sept. 2010

Sandbox

EAN-13 / ISBN-13

A 012345678901

Checksum: 2 **B**

[Out of ISBN range]

EAN-13 / ISBN-13

1234567890128

C Valid code [EAN: 1234567890128]

[Out of ISBN range]

EAN-13 / ISBN-13

978-0-12-345678-6

D Valid ISBN

[English language]

EAN-13 / ISBN-13

978-8-123456786

E Invalid checksum - Fix: 2

[India] ISBN: 978-81-234-5678-2

G

EAN-13 / ISBN-13

978-2123456780

F Valid ISBN [ISBN: 978-2-12-345678-0]

[French language]

H

EAN-13 / ISBN-13

978-0-1-234-5-678

Checksum: 6

[English language] ISBN: 978-0-12-345678-6

I

2 EAN-13 / ISBN-13 VALIDATION

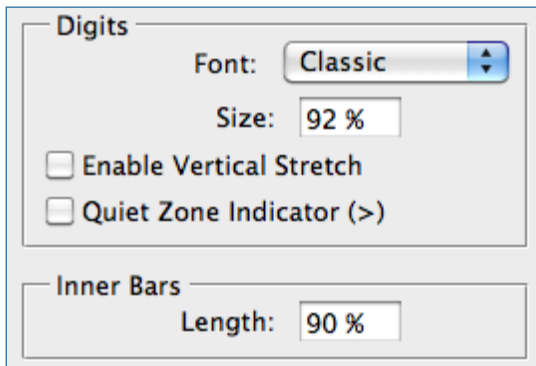
1. Enter or paste the digits of the barcode in the **EAN-13 / ISBN-13** zone **A**. BookBarcode dynamically checks the entered data **C D** so you cannot validate a wrong number **E**. The EAN-13 checksum (13th digit) is calculated and displayed as soon as possible **B**.
2. The script automatically recognizes any **valid ISBN-13** —you don't need to key the hyphens **F**. In this case, it prompts the corresponding country **G** or language **H** and pop-ups the ISBN segmentation **I**.
3. Note that the **Create** button is disabled as long as the code is invalid or incomplete.

- A valid EAN-13 is not necessary a valid ISBN-13. Although BookBarcode allows you to create any EAN-13 barcode, it also indicates whether your code belongs to the "ISBN space".
- By default, the script pre-fills the input field with the ISBN prefix that matches your **InDesign locale** —e. g. "978-3" for German users.

BookBarcode howtos

© Indiscripts.com | Sept. 2010

Sandbox



3

ADJUSTING THE BARCODE STYLE

1. The **Digits** panel controls the appearance of the digit block. Choose first the **Font** and the figure **Size**. **Enable Vertical Stretch** forces the figures to scale up to the maximum available height.
2. Check **Quiet Zone Indicator** to add the > symbol at the right side of the barcode.
3. **Inner Bars Length** indicates the relative size of the inner lines.



- BookBarcode offers a set of **7 digit fonts**. To ensure ANSI OCR-B compliance, choose '**Classic**'.

- Your settings are automatically stored within each barcode you create, so you can easily edit/update the object later from its actual properties.

BookBarcode howtos

© Indiscripts.com | Sept. 2010

Sandbox

Orientation

Horizontal

Upwards [+90°]

Downwards [-90°]

Dimensions

Including the digits

Width:

Height:



4

ADJUSTING THE BARCODE DIMENSIONS

1. **BookBarcode Pro** allows you to enter the **Dimensions** — and to specify the desired **Orientation** — of the barcode, which is useful if you create the object from scratch (i. e. without 'template').
2. Keep in mind that the barcode's **Width** is defined considering the orientation of the digit block:

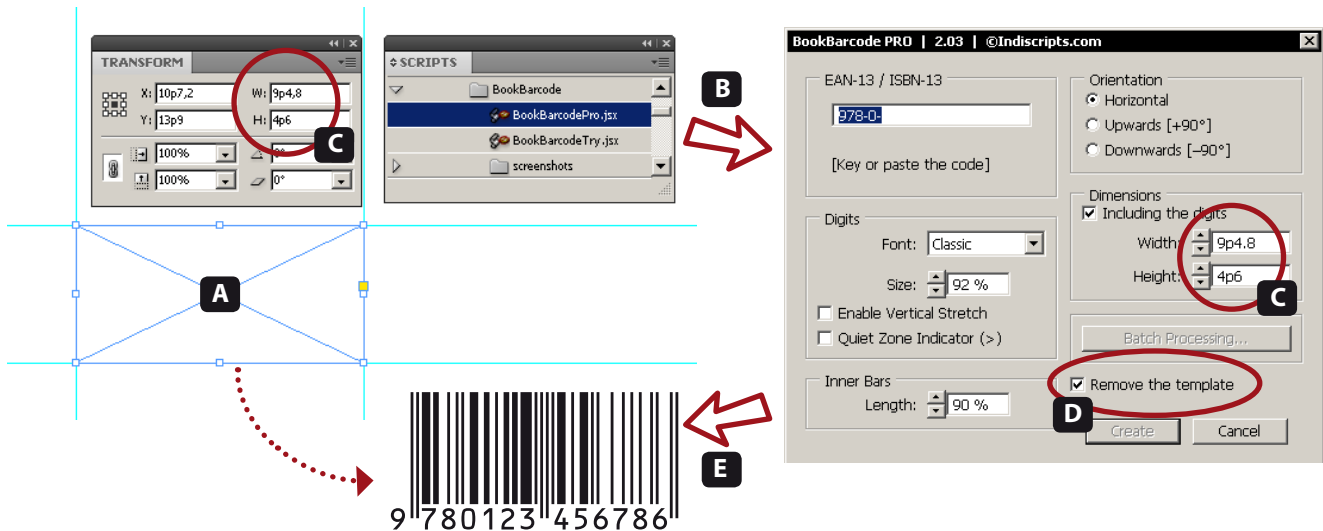


- The Width and/or the Height of a barcode can vary from **26 to 8640 pt.**
- The Dimensions fields support various **measurement units**: pt, mm, p, pc, in, etc. The values and units you enter are converted into the current ruler units.

BookBarcode howtos

© Indiscripts.com | Sept. 2010

Sandbox



5

USING A TEMPLATE

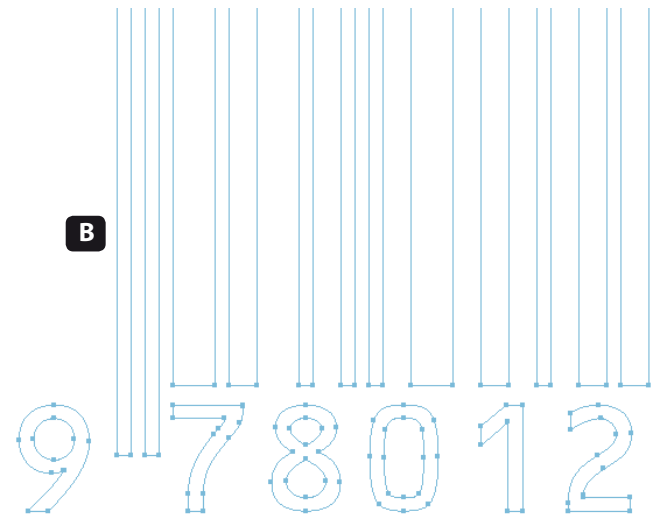
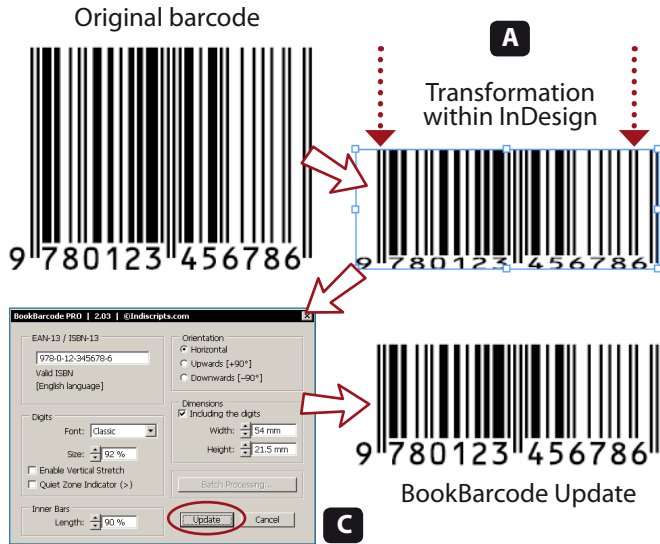
- To preset the dimensions of a barcode, you can use any InDesign frame as a template:
 - Create and **select** a rectangle **A**.
 - Run BookBarcode **B**. Note that the **Dimensions** panel reflects the rectangle Width / Height **C**.
 - The option which is labelled "**Remove the template**" is checked by default **D**.
 - Enter the EAN-13 and click **Create**. The new barcode takes the place of the rectangle **E**.
- The script assumes that the longest side of the original rectangle represents the width of the barcode. So, using a template implicitly presets the **Orientation** mode.

- A **Text Frame** can be used as a template too.
- Once a barcode has been processed by BookBarcode, InDesign CS4 and CS5 users can reverse the whole operation using **Edit > Undo BookBarcode**.

BookBarcode howtos

© Indiscripts.com | Sept. 2010

Sandbox



6

RESIZING, EDITING, UPDATING A BARCODE

1. To resize an existing barcode, simply select the object and rescale it **A**. You may safely use any of the InDesign transformation tools since BookBarcode only creates **vector arts** **B**.
2. You can also change the size of the barcode through the script dialog to countervail inopportune deformations and/or restore the correct proportions of the object. Then select the barcode, run the script and click **Update** **C**.
3. To **edit** a barcode — change the EAN, the font, the style, etc.— use the same method: select the object, run the script and adjust the parameters at your convenience before clicking **Update**.

■ BookBarcode supports rotated objects as **rotated Spread Views** (InDesign CS4/CS5), so you can edit a barcode whatever its apparent angle.

BookBarcode howtos

© Indiscripts.com | Sept. 2010

Sandbox



7 SYNCING A BARCODE WITH AN "ISBN FRAME"

1. **BookBarcode Pro** allows you to 'link' a custom text frame to any existing barcode in order to sync it with an ISBN-13 label. The associated text frame will be updated each time you edit the barcode:
 - Create your barcode first, then set up a text frame to contain the ISBN data **A**.
 - Select and **group** the barcode with the ISBN frame (**Object > Group**) **B**.
 - Run **BookBarcode** and click **Update**. The script outputs the ISBN-13 string in the attached frame **C**.
2. You can add additional text before and after the ISBN string **D**. Whether you edit the EAN code later, **BookBarcode** will automatically update the ISBN too.

- The first time you link a text frame to a barcode, **BookBarcode** adds the ISBN-13 at the end of the associated frame. However, you can preset the frame contents by using the keyword `<isbn>` as a placeholder. E. g.: ISBN: `<isbn>` \$39.00.

BookBarcode howtos

© Indiscripts.com | Sept. 2010

Sandbox



The model



Create the barcode.



Create the text frame and apply a black stroke.



Select the group and run the script to update the ISBN.



Group the frame and the barcode.



Format the contents and adjust the Inset Spacing.

8

CUSTOMIZING THE ISBN FRAME

1. As an exercise, let's create a barcode group as shown in Figure **A**. Our goal is to produce a reusable layout for several book covers. We need a border around the block and some static text in the ISBN frame.
 - First, create the **barcode** at the desired size with BookBarcode **B**.
 - Create a **text frame** to contain the whole layout and apply a black border (**stroke**) **C**.
 - Format the contents of the frame —using the **<isbn>** placeholder— and adjust the inset spacing (**Text Frame Options** dialog) **D**. You can now **group** the barcode with the ISBN frame **E**.
2. The resulting group is ready-to-use with BookBarcode **F**.

- Of course you can export an ISBN-Barcode group as an InDesign **Snippet** (.idms), or store it into a **Library**.
- A similar method can be used to prepare complex templates for **Batch Processing** (see Pages 9-10).

BookBarcode howtos

© Indiscripts.com | Sept. 2010

Sandbox



9

BATCH PROCESSING — THE BASICS

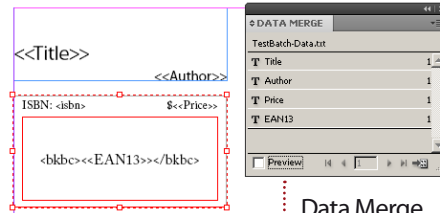
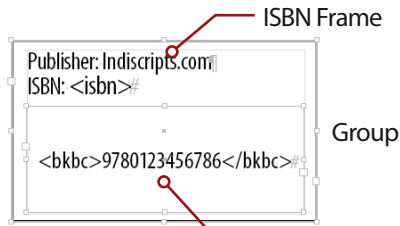
1. **Batch Processing** allows you to generate a set of barcodes. The method consists of using a **text frame** to define both the location and the EAN-13 of each barcode. Before you begin, a good practice is to work on a **separate layer** to easily handle and target the textframes that the script will convert into barcodes.
2. Set each target to the desired size, and simply enter an EAN-13 number —and nothing else!— in each text frame. The **13 digits** are required.
3. Run BookBarcode and click "Batch Processing..." In the **Batch Processing dialog**, choose your target **Layer** and select 'EAN13' as **Contents Pattern**. Finally, click **Proceed**.

- In **BookBarcode Try**, Batch Processing is limited to 5 barcodes.
- Make sure that you provide **complete and valid EAN-13 numbers** in the target text frames. Batch Processing ignores any target that contains a wrong code.

BookBarcode howtos

© Indiscripts.com | Sept. 2010

Sandbox



Data Merge



10 BATCH PROCESSING — ADVANCED

1. The **Batch Processing** dialog gives you the ability to use three more specific markup formats: `<bkb>EAN13</bkb>`, `<bkb>EAN13</bkb>`, or `<ean>EAN13</ean>` (where **EAN13** refers to the 13-digits EAN). Only textframes whose contents exactly matches the selected pattern will be treated.
2. **Batch Processing** also supports targets which are **grouped** with an additional ISBN frame **A**.
3. All barcodes are styled considering the current **Digits** and **Inner Bars** settings in the main script dialog.
4. If your EAN-13 numbers come from a **database**, an easy way to prepare your document for Batch Processing is to use the InDesign **Data Merge** feature **B**.

- Remember to backup your InDesign document before batch processing! This feature may consume a lot of CPU resources — as it scans the whole document and computes a large amount of pathpoints for each barcode.